

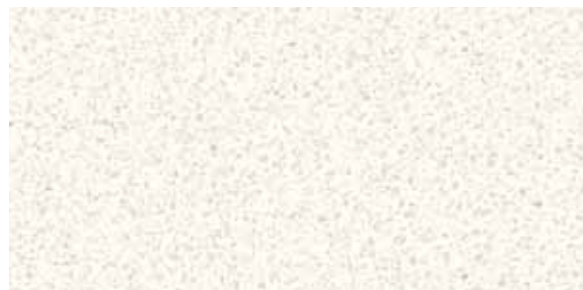


white · crema luna
lexus lifestyle living room
arcila-duque furniture interiors · casadecor miami, florida, usa

TREND SURFACES



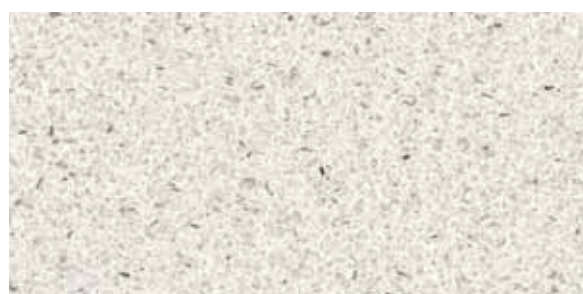
IVORY



BIANCO REALE



SUNSET BEACH



HYDRA WHITE



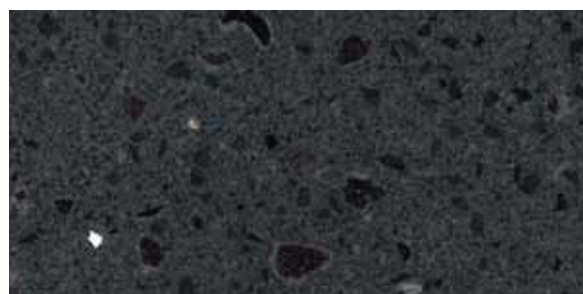
CLAY



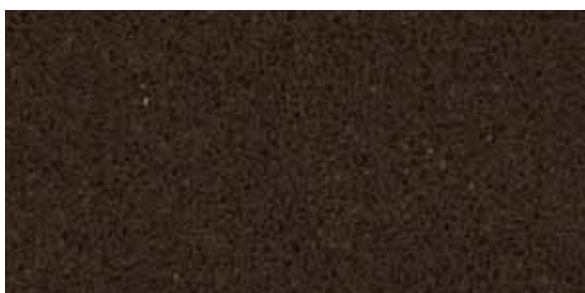
VENUS GREY



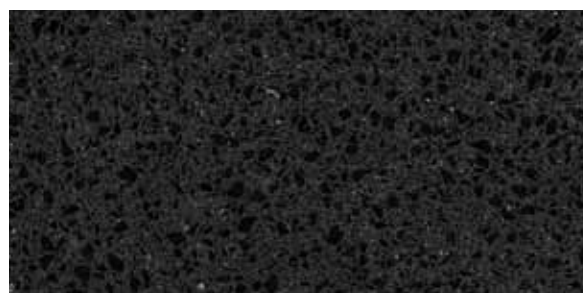
TERRACOTTA



BLUE WHALE



DARK CHOCOLATE



BLACK DIAMOND

TREND SURFACES



PERLA BIANCA



POLAR ICE



ORANGE



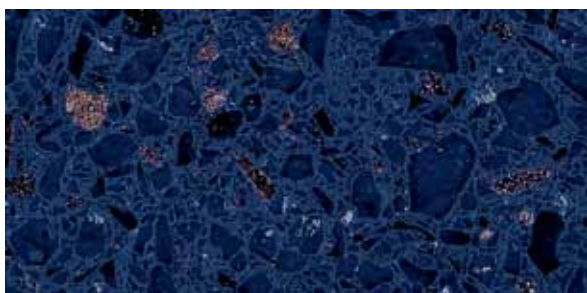
WHITE STAR



RED



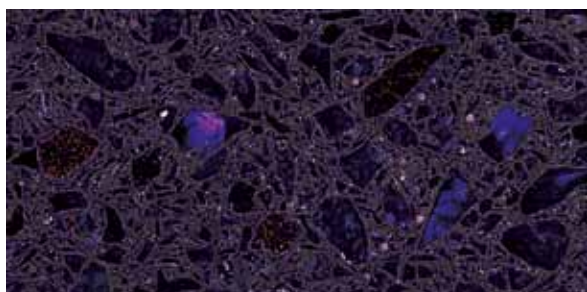
DOVE TAIL



DARK BLUE



NERO MALTESE



PURPLE BLUE



BLACK STAR



white · dark blue
samaniego · spain

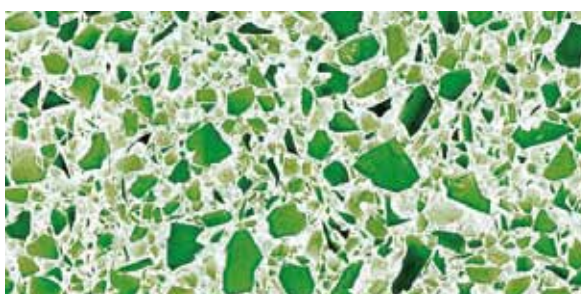


green dream · terracotta · sunset beach · chiaro ambra · custom color
salone del mobile · milan, italy

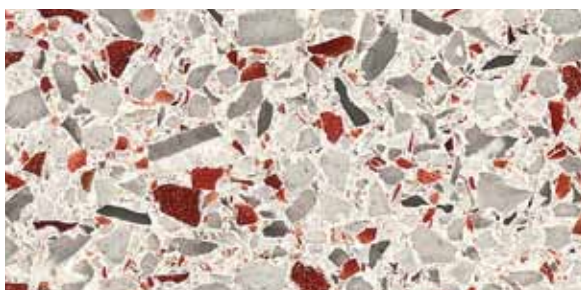
TREND SURFACES



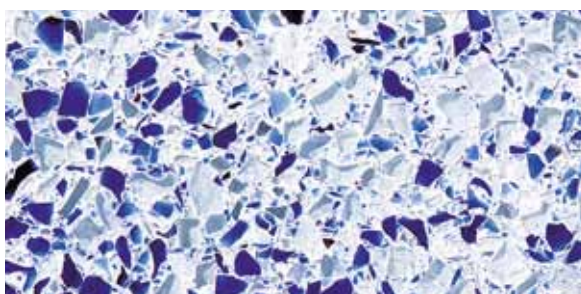
WHITE



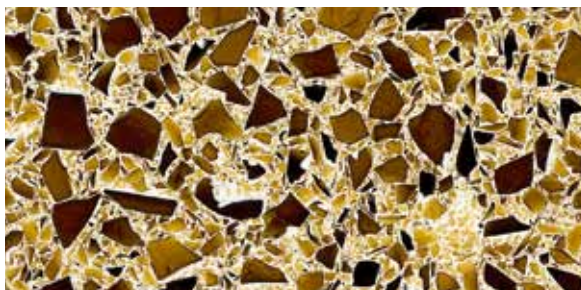
GREEN DREAM



WHITE COPPER



BLUE DREAM



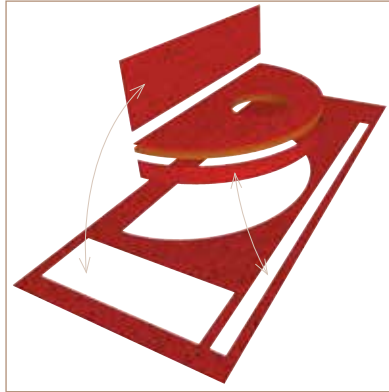
CHIARO AMBRA

CARATTERISTICHE DI PRODOTTO

Product characteristics · Caratéristiques du produit · Eigenschaften der Agglomeratplatten
Caraterísticas de productos · Характеристика материала

Adatto per tutte
le superfici

Suitable for all surfaces
Adapté pour toutes les superficies
Für alle Oberflächen geeignet
Apto para todo tipo de superficie
Подходит для всех поверхностей



Versatile
Versatile
Vielseitig anwendbar
Versàtil
Универсальный

Robinson test
Resistenza ai carichi
extra pesanti

Rated extra heavy
Résistance aux chargements tres lourdes
Hohe Belastbarkeit
Resistencia a cargas extra pesadas
Устойчивость к особо тяжелым грузам



Installazione anche
su superfici esistenti
Install over existing surfaces
Installation également sur surface existante
Einbau auf existierenden Flächen
Instalación en superficies existentes
Укладка на уже существующие поверхности

Basso spessore
e leggero

Thin and lightweight
Basse épaisseur et léger
Geringer Stärke und Leicht
Bajo espesor y Ligero
малой толщины и легкий



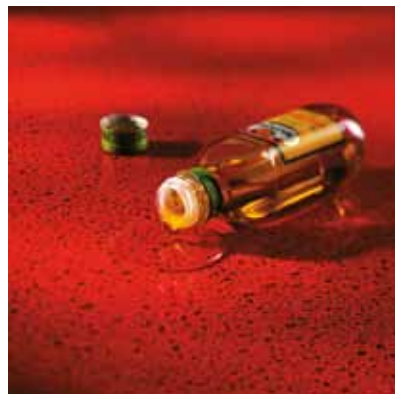
 14 kg/mq
2.87 lbs/sqf



Resistenza all'urto
Impact Resistant
Resistance au choc
Stoßfestigkeit
Resistencia al choque
Ударопрочность

NSF 51
Anassorbenza

Non-porous
Inabsorptivite
Absorptionsbeständig
No absorventes
Неабсорбентность



Antigraffio
Scratch resistant
Anti-éraflures
Kratzfrei
Irrayable
устойчив к появлению царапин

Resistenza agli
agenti chimici

Chemical resistant
Resistance aux produits chimiques
Säure-und laugenbeständigkeit
Resistencia a los agentes químicos
Устойчивость к воздействию кислот



Resistenza agli
sbalzi termici
Resistance to thermal shocks
Resistance aux chocs thermiques
Temperatur-wechselbeständigkeit
Resistencia a los cambios de temperatura
Устойчивость к перепадам температуры



DIMENSIONI · CARATTERISTICHE TECNICHE

Dimensions · Dimensioni · Dimensionen · Größe · Medidas · Размер

Technical Characteristics · Caractéristiques techniques · Technische Eigenschaften · Características técnicas · Технический раздел



ASTM C 373 · UNI EN ISO 10545 (3)
WATER ABSORPTION
NONE



ASTM C 484 · UNI EN ISO 10545 (9)
THERMAL SHOCKS RESISTANCE
RESISTANT



ASTM D 256
IMPACT RESISTANCE
6.1 J/m



ASTM C 648
BREAKING STRENGTH
40.9 MPa



ASTM D 790M
FLEXURAL STRENGTH
28.1 MPa



ASTM C 1243 · UNI EN ISO 10545 (6)
ABRASIVE WEAR
87.1 mm³



ASTM C 1028 (Wet/Dry)
FRICTION COEFFICIENT
0.63/0.91



ASTM D 648
HIGH TEMPERATURE RESISTANCE
94°C



ASTM D 1712
STAIN RESISTANCE
NO STAINING



DIN 51094
LIGHT EXPOSURE
RESISTANT



UNI 8457
RESISTANCE TO FIRE
CLASS 1



DIN 51130
RESISTANCE TO SKIDDING
R9



RECYCLED CONTENT
UP TO 72%



UNI EN ISO 10545 (8)
LINEAR THERMAL EXPANSION
23.8 x 10⁻⁶ °C⁻¹



UNI EN ISO 10545 (9)
RESISTANCE TO THERMAL SHOCKS
RESISTANT



UNI EN ISO 10545 (12)
FROST RESISTANCE
RESISTANT



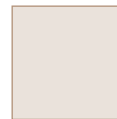
DIN 51961
RESISTANCE TO CIGARETTE BURNS
RESISTANT



29,85 x 29,85 cm
12" x 12"



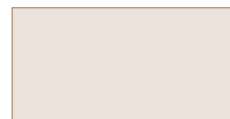
60 x 29,85 cm
24" x 12"



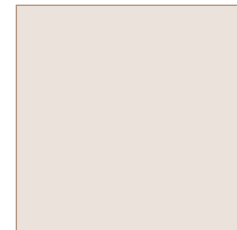
60 x 60 cm
24" x 24"



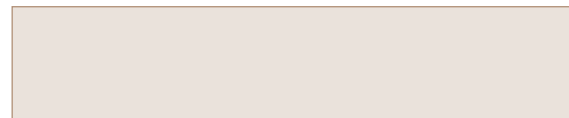
99 x 14,7 cm
39" x 5 3/4"



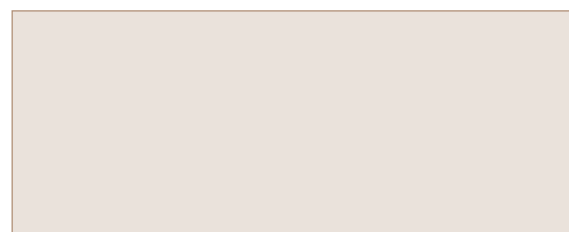
120 x 60 cm
48" x 24"



120 x 120 cm
48" x 48"



300 x 60 cm · 118" x 24"



300 x 120 cm · 118" x 48"

Misure speciali su richiesta
Special sizes upon request
Mesures spéciales sur demande
Spezialabmessungen auf Anfrage
Medidas especiales sobre demanda
Специальные размеры по заказу



TECHNICAL INFORMATION

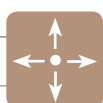


recycled glass

TREND SURFACES TABELLA MISURE E PESI

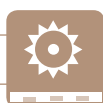
WEIGHT AND DIMENSIONS · TABLEAU DES POIDS ET DIMENSIONS
GRÖÖE UND GEWICHTE · TABLA DE MEDIDAS Y PESOS · РАЗМЕРЫ И ВЕС

SPESSORE THICKNESS ÉPAISSEUR STÄRKE ESPEJOR ТОЛЩИНА	6,6 mm · 1/4"
PESO WEIGHT POIDS GEWICHT PESO ВЕС	14 kg/m ² · 2.87 lbs/sqf
MISURE DIMENSIONS DIMENSIONS GRÖÖE MEDIDAS РАЗМЕР	29,85 x 29,85 cm · 12" x 12" 60 x 29,85 cm · 24" x 12" 60 x 60 cm · 24" x 24" 99 x 14,7 cm · 39" x 5 3/4" 120 x 60 cm · 47" x 24" 120 x 120 cm · 48" x 48" 300 x 60 cm · 118" x 24" 300 x 120 cm · 118" x 48"



UNI EN ISO 10545 (8)

COEFF. DI DILATAZIONE TERMICA LINEARE COEFF. OF LINEAR THERMAL EXPANSION COEFF. DE DILATATION THERMIQUE LINEAIRE LÄNGENAUSDEHNUNGSKOEFFIZIENT COEF. DE DILATACIÒN TERMICA LINEAR КОЭФФ. ТЕРМИЧЕСКОГО ЛИНЕЙНОГО РАСШИРЕНИЯ	CR 23,8 x 10 ⁻⁶ °C ⁻¹ PR 19,5 x 10 ⁻⁶ °C ⁻¹ RS 20,6 x 10 ⁻⁶ °C ⁻¹ TC 29 x 10 ⁻⁶ °C ⁻¹
--	--



UNI EN ISO 10545 (6)

RESISTENZA ALL' ABRASIONE PROFONDA DEEP ABRASION RESISTANCE RESISTANCE A L' ABRASION PROFONDE BESTÄNDIGKEIT GEGEN TIEFENVERSCHEISS RESISTENCIA A LA ABRASION PROFUNDA УСТОЙЧИВОСТЬ К ГЛУБОКОМУ МЕХАНИЧЕСКОМУ ТРЕНИЮ	CR 151,8 mm ³ PR 221 mm ³ RS 87,4 mm ³ TC 128 mm ³
--	---



ASTM D 256

RESISTENZA ALL' URTO RESISTANCE TO IMPACT RESISTANCE AU CHOC STOßFESTIGKEIT RESISTENCIA AL CHOQUE УДАРОПРОЧНОСТЬ	CR 6,1 J/m PR 6,1 J/m RS 7,4 J/m TC 6,9 J/m
---	--



UNI 8457

RESISTENZA AL FUOCO RESISTANCE TO FIRE RESISTANCE AU FEU FEUERBESTÄNDIGKEIT RESISTENCIA AL FUEGO ОГНЕУСТОЙЧИВОСТЬ	classe 1 class 1 classe 1 Klasse 1 classe 1 класс 1
--	--

CARATTERISTICHE TECNICHE

TEST DATA · CARACTÉRISTIQUES TECHNIQUES · TECHNISCHE EIGENSCHAFTEN
CARACTERÍSTICAS TÉCNICAS · ТЕХНИЧЕСКИЙ РАЗДЕЛ



UNI EN ISO 10545 (13)

RESISTENZA AGLI AGENTI CHIMICI RESISTANCE TO CHEMICAL AGENTS RESISTANCE AUX PRODUITS CHIMIQUES SÄURE- UND LAUGENBESTÄNDIGKEIT RESISTENCIA A LOS AGENTES QUÍMICOS УСТОЙЧИВОСТЬ К ВОЗДЕЙСТВИЮ КИСЛОТ	resistente resistant résistant beständig resistente устойчива
---	--



UNI EN ISO 10545 (9)

RESISTENZA AGLI SBALZI TERMICI RESISTANCE TO THERMAL SHOCKS RESISTANCE AUX CHOCs THERMIQUES TEMPERATURWECHSELBESTÄNDIGKEIT RESISTENCIA A LOS CAMBIOS DE TEMPERATURA УСТОЙЧИВОСТЬ К ПЕРЕПАДАМ ТЕМПЕРАТУРЫ	resistente resistant résistant beständig resistente устойчива
---	--



UNI EN ISO 10545 (3)

ASSORBIMENTO ACQUA WATER ABSORPTION ABSORPTION D'EAU WASSERAUFNAHME ABSORCION DE AGUA ВОДОПОГЛОЩЕНИЕ	nullo none nulle null nula ноль
---	--



DIN 51094

RESISTENZA DEI COLORI ALLA LUCE COLOURS RESISTANCE TO FADING RESISTANCE DES COULEURS A LA LUMIERE FARBBESTÄNDIGKEIT RESISTENCIA DE LOS COLORES A LA LUZ УСТОЙЧИВОСТЬ К СВЕТУ	resistente resistant résistant beständig resistente устойчива
---	--



UNI EN ISO 10545 (12)

RESISTENZA AL GELO FROST RESISTANCE RESISTANCE AU GEL FROSTBESTÄNDIGKEIT RESISTENCIA AL HIELO МОРОЗУСТОЙЧИВОСТЬ	resistente resistant résistant beständig resistente устойчива
--	--



DIN 51130

RESISTENZA ALLO SCIVOLAMENTO RESISTANCE TO SKIDDING RESISTANCE AU GLISSEMENT GLEITBESTÄNDIGKEIT RESISTENCIA AL DESLIZAMIENTO УСТОЙЧИВОСТЬ К СКОЛЬЖЕНИЮ	R9
---	----



DIN 51961

RESISTENZA ALLA BRACE DI SIGARETTA RESISTANCE TO CIGARETTE BURNS RESISTANCE A LA BRAISE DE CIGARETTE WINDERSTAND GEGEN ZIGARETTENGLUT RESISTENCIA A LA BRASA DE CIGARRILLO УСТОЙЧИВОСТЬ К СИГАРЕТНОМУ ПЕПЛУ	resistente resistant résistant beständig resistente устойчива
--	--